

Components

- 4 radio-controlled measuring heads
- Two-way cameras (equivalent to 8 sensors)
- PC with 17" screen, high capacity hard drive, CD-ROM drive, Windows® 98
- Measurement head charger supports (radio version)
- 2 wall charger supports (8677)
- 4 self-centring supports
- 2 mechanical swivel plates
- 1 pedal pusher
- 1 steering block
- Desk (except 8677W8S-RPL)
- A4 colour printer
- Keyboard, 105 keys and mouse
- Dimensions 1300 x 750 x 1700 mm
- Weight: 90 to 130 kg (depending on model).

Options

- Calibration kit,
- Support without run-out alignment BMW, Porsche, Mercedes,
- Universal support (PAX Michelin wheels, special rims, etc.),
- Radar alignment kit,
- Flat screen,
- Radio repeater display.

Services



Extended warranty (France)
For long-term carefree use of your equipment.



On-site commissioning
To help you start out with your new equipment



Routine maintenance
For carefree work, day after day.



Statutory maintenance (France)
2 check-ups a year including calibration and adjustment if required



Software updates (France)
To keep your equipment in top condition



Hotline
Comprehensive support for your equipment



Remote support (France)
Save time with our remote support service



Training
Stay ahead of the pack in your field



Financing (France)
Rent the equipment and services you need
- Fast, easy access to the latest generation of garage equipment
- Simplified investment management
- 5-year lease with integrated after-sales service

Features and programs

| | 8657 | 8667 | 8677 | 8677-17RPL | 8677W8S-RPL |
|---|------|------|------|------------|-------------|
| FULL VEHICLE GEOMETRY | | | | | |
| Overall or wheel-by-wheel parallelism | ■ | ■ | ■ | ■ | ■ |
| Camber, castor, kingpin offset, included angle | ■ | ■ | ■ | ■ | ■ |
| Steering divergence, max steering angle | | ○ | ■ | ■ | ■ |
| Axle offset, toe-in, toe-out, axle alignment, thrust angle | | | | ■ | ■ |
| Offset, setback | ■ | ■ | ■ | ■ | ■ |
| Parallelism drift | ■ | ■ | ■ | | |
| ELECTRONIC WHEEL RUN-OUT MEASUREMENT | | | | | |
| 3-point | ■ | ■ | ■ | ■ | ■ |
| Simultaneous | ■ | ■ | ■ | | * |
| SPECIAL PROGRAMS | | | | | |
| On traditional lifts | ■ | ■ | ■ | ■ | |
| On 2-post or scissor lifts (hanging wheels) | ■ | ■ | ■ | | |
| Ride height for Mercedes vehicles with special tool | ■ | ■ | ■ | | |
| Special program (Muller Bem patent) provide assistance for onboard anti-collision radar alignment | ○ | ○ | ■ | | ■ |
| HELP | | | | | |
| On-line user help | ■ | ■ | ■ | ■ | |
| Adjustment (animated graphics) | ○ | ○ | ■ | | ■ |
| SPECIAL FEATURES | | | | | |
| Measurement self-checking | ■ | ■ | ■ | ■ | |
| 5 workstation configuration capability | ■ | ■ | ■ | | |
| Operation sequencing (full geometry, fast diagnostics...) | ■ | ■ | ■ | | |
| Stores geometry defects on workstation (for automatic correction of camber, caster, etc.) | ■ | ■ | ■ | | ■ |
| Customer data archiving | ■ | ■ | ■ | ■ | ■ |
| Job archiving | ■ | ■ | ■ | ■ | ■ |
| Automotive manufacturer databank | ■ | ■ | ■ | ■ | ■ |
| Personal databank | ■ | ■ | ■ | ■ | ■ |

■ Standard ○ Optional * Development in progress

ACTIA **MULLER**
Services

5, rue de la Taye - 28110 LUCÉ
Tel : +33 (0)2 37 33 34 00 - Fax : +33 (0)2 37 33 34 35

www.actiamullerservices.com

For any further information or order: Your business contact



Due to evolving technology, Actia Muller Service reserves the right to change the technical features of these products at any time. Photos are not contractually binding.

05/2005

Light vehicles
Heavy vehicles



Alignment

The new range



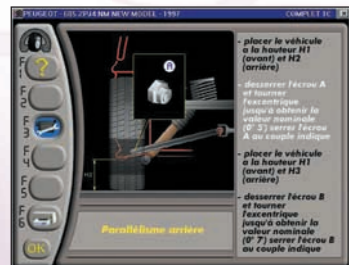
Your accurate measurement guarantee.



All our models of MULLER BEM alignment devices feature state-of-the-art measuring heads. Each head performs two measurements using a built-in two-way camera (MULLER patent).

The new range operates with light vehicles, utility vehicles and heavy vehicles (straight trucks, tractors, busses, trailers, semi-trailers).

It also tests seriously damaged vehicles.



Cost-efficient

Our proprietary program for 2-post lifts (Muller Bem patent) provides complete alignment functions plus:

- a smaller alignment station footprint to save workshop space,
- the ability to use an existing, non-dedicated station,
- total accessibility to all vehicle parts (during the adjustment phase),
- time savings, since the alignment station travels to the vehicle and not the other way round,
- better vehicle flow through the workshop.



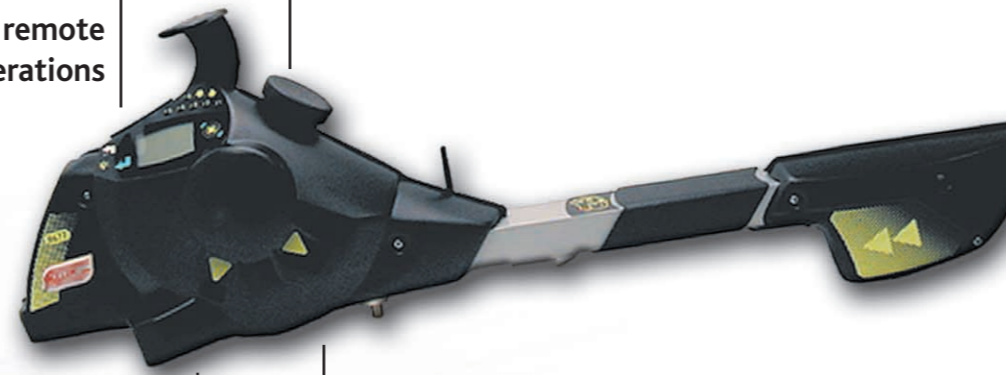
Dependable

Eight sensors in four two-way cameras (MULLER BEM patent) guarantee improved measurement accuracy. In addition, the 8667 and 8677 radio link versions featuring the brand new optoelectric system (MULLER patent) measure steering divergence at 20° and max steering angle without the need for an electronic test bed.



State-of-the-art measuring head

Keypad provides full remote control of all operations



Electronic data display (spirit level, battery charge)

Two-way camera does the job of a full 8-sensor system on the horizontal plane

10-hour battery charge (in operation)



8657
Economy comes first



8667
Featuring radio technology



8677
Intensive use



• 8677-17RPL

- Industrial PC.
- Highly user-friendly Windows® adjustment software.
- Measures maximum steering angle (without electronic swivel plates).

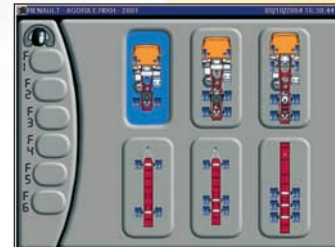
• 8677W8S-RPL

- Designed to adapt to the Bilanmatic 10000PL brake test unit.

- An optional mobile radio terminal lets you work interactively from inside the pit.



- Special self-centring attachments for Heavy Vehicle alignment, featuring two clamp types (steel and aluminium rims) plus a safety attachment.



Choosing a method



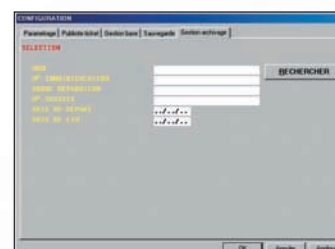
Rolling run-out alignment



Adjustment



Job report



Card input and data archiving